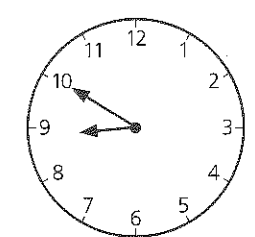
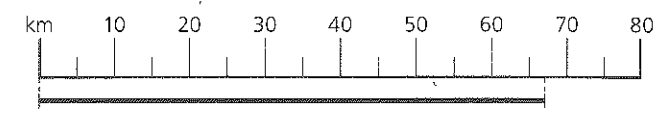


SECTION 1 | Test 9

- | A | Answer |
|--|---------|
| 1 $300 + 60 + 5 =$ | 365 |
| 2 $6 \times 4 = \dots \times 6$ | 4 |
| 3 $1\text{kg} - 200\text{g} = \dots \text{g}$ | 800g |
| 4 $34 + 37 =$ | 71 |
| 5 $.45\text{min} + 20\text{min} = \dots \text{h} \dots \text{min}$ | 1h 5min |
| 6 $(7 \times 4) + 3 =$ | 31 |
| 7 $\text{£}1 - 53\text{p} = \dots \text{p}$ | 47p |
| 8 $9\text{p} \times 6 = \text{five } 10\text{ps} + \dots \text{p}$ | 4p |
| 9 $70\text{cm} + 60\text{cm} = 1\text{m} \dots \text{cm}$ | 30cm |
| 10 $42 \div 6 =$ | 7 |

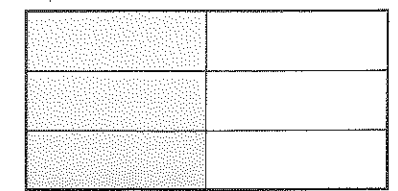
- | B | Answer |
|---|--------|
| 1 Write three hundred and forty-nine in digits. | 349 |
| 2 How much longer is 1 metre than 57 centimetres? | 43cm |
| 3 Increase $\frac{1}{2}\text{kg}$ by 250g. | 750g |
| 4 350ml less than 1l | 650ml |
| 5 What number is four times greater than 9? | 36 |
| 6 $\text{£}1$ minus the sum of 20p, two 10ps and eight 5ps. | 20p |
| 7 Add the odd numbers between 28 and 32. | 60 |
| 8 How many 5ps are equal in value to twenty-five 2ps? | 10 5ps |
| 9 Find the difference between 6×5 and 6×2 . | 18 |
| 10 Write in £ s the cost of twenty-five 4p toffees. | £1.00 |

- | C | Answer |
|--|---------------|
| 1 How many 5ps are equal in value to 80p? | 16 5ps |
| 2 Which two of these numbers are multiples of 2?
41 60 57 33 84 | 60 84 |
| 3 How many days altogether in March and April? | 61 |
| 4 Write to the nearest 10km the distance represented by the line. | 70km |
| 5 Which four coins together make 10p? | 5p 2p 2p 1p |
| 6 What fraction of 30p is 5p? | $\frac{1}{6}$ |



This clock is 20 minutes slow. Write the correct time in digital form. Use a.m. or p.m.
9.10 a.m.

- | | |
|---|-----------------------------|
| 8 Tom had 27p. He spent $\frac{1}{3}$ of his money. How much had he left? | 18p |
| 9 Find the cost of 100g if $\frac{1}{2}\text{kg}$ costs 40p. | 8p |
| 10 Write what fraction of the rectangle is shaded using two different equivalent fractions. | $\frac{1}{2}$ $\frac{3}{6}$ |



- | A | Answer |
|--|--------|
| 1 Write 176p in £ s. | £1.76 |
| 2 $30\text{cm} \times 4 = 1\text{m} + \dots \text{cm}$ | 20cm |
| 3 $\frac{1}{4}\text{h} + 20\text{min} = \dots \text{min}$ | 35min |
| 4 $\text{£}1 - 81\text{p} = \dots \text{p}$ | 19p |
| 5 three 5ps = \dots 2ps + 1p | 7 2ps |
| 6 $25 + 66 =$ | 91 |
| 7 $8\text{p} \times 6 = 50\text{p} - \dots \text{p}$ | 2p |
| 8 $1\text{km} - 450\text{m} = \dots \text{m}$ | 550m |
| 9 $60 \div 12 =$ | 5 |
| 10 $300\text{ml} + 330\text{ml} = \frac{1}{2}\text{l} + \dots \text{ml}$ | 130ml |

- | B | Answer |
|--|---------|
| 1 Find the sum of 8 and 492. | 500 |
| 2 Decrease 205 by 10. | 195 |
| 3 Which number is four times greater than 19? | 76 |
| 4 Write the next two numbers in this sequence.
250, 300, 350, \dots | 400 450 |
| 5 How many grams in one-tenth of a kilogram? | 100g |
| 6 Find the total of $4\frac{1}{2}\text{l}$, $7\frac{1}{2}\text{l}$ and 15l. | 27l |
| 7 Write in digits the sum of one hundred and eighty and twenty-one. | 201 |
| 8 How much less is the product of 6 and 5 than 49? | 19 |
| 9 Find the cost of three drinks costing 25p each. | 75p |
| 10 Divide $\text{£}2.00$ by 10. | 20p |

SECTION 1 | Test 10

- | C | Answer |
|--|---------------|
| 1 Name the fifth month of the year. | May |
| 2 How many 5ps are equal in value to two 20ps? | 8 5ps |
| 3 Which of the following angles is a right angle? | Z |
| 4 Find the change from 50p after buying three boxes costing 9p each. | 23p |
| 5 How far is it from Tigby to Cater? | 37km |
| 6 Write in digits the number which is ten times one hundred. | 1000 |
| 7 How much more than $\frac{1}{2}$ of this rectangle is shaded? | $\frac{1}{4}$ |
| 8 Which four coins together make 36p? | 20p 10p 5p 1p |
| 9 Keyrings 5 for 20p How much do 20 keyrings cost? | 80p |
| 10 Ten mints cost 60p. How much would three mints cost? | 18p |

