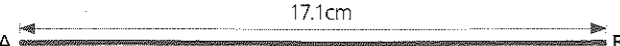
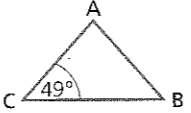


SECTION 3 | Test 7

Schofield & Sims

- A Answer**
- Write in digits $\frac{1}{10}$ of 1 million. 100 000
 - $85\text{g} \times 100 =$ kg 8.5kg
 - $1.06 - 0.79 =$ 0.27
 - $480\text{mm} =$ m 0.48m
 - $\frac{5}{6}$ of 30p = 25p
 - $905 \div 100 =$ 9.05
 - a 1% of £3.00 = p a 3p
b 9% of £3.00 = p b 27p
 - $£0.04 \times 50 =$ £2.00
 - $\frac{3}{4}\text{h} + 35\text{min} =$ h min 1h 20min
 - $2.65\text{l} =$ ml 2650ml
 - $19\text{p} + 7\text{p} + 5\text{p} + 8\text{p} =$ £ £0.39
 - $\frac{3}{4} \times 8 =$ 6

- B Answer**
- Write as a decimal the sum of 9 tenths and 37 thousandths. 0.937
 - Find the two missing numbers in this sequence.
70, 7, , 0.07, 0.7 0.007
 - What is the average of 15cm, $\frac{1}{4}\text{m}$ and 17cm? 19cm
 - Increase £7.50 by 10%. £8.25
 - By how many twelfths is $1\frac{5}{6}$ less than $2\frac{1}{4}$? $\frac{5}{12}$
 - Write in 24-hour clock times.
a 18min before noon a 11:42
b $\frac{1}{2}\text{h}$ after 7.57 p.m. b 20:27
 - Find the difference between $\frac{1}{5}$ of 25 and $\frac{1}{3}$ of 45. 10
 - 5% of a sum of money is £0.40. Find the whole amount. £8.00
 - Approximate
a 10.25l to the nearest litre a 10l
b £439.87 to the nearest £. b £440
 - Find in millimetres the length of a line 15mm shorter than AB.
 156mm
 - What is the cost of 800g at 90p per kilogram? 72p
 - The area of a rectangle is $66\frac{1}{2}\text{cm}^2$. The width of the rectangle is 7cm. Find its length. $9\frac{1}{2}\text{cm}$

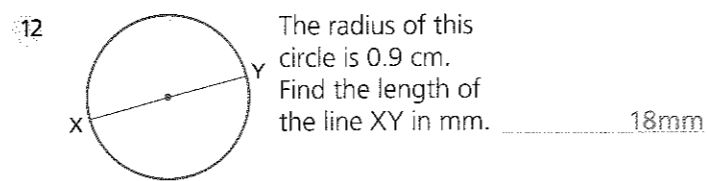
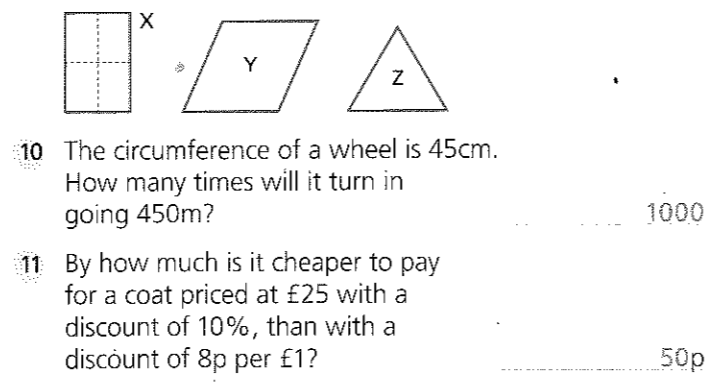
- C Answer**
- Write in words the number which is equal to $(3 \times 10^3) + (6 \times 10^2)$. three thousand six hundred
 - There are 60 cards in a packet. There are 12 packets and 17 cards left over. How many cards are there altogether? 737
 - A bill for £4.23 is paid with a £5 note. Name the four coins given as change. 50p 20p 5p 2p
 -  ABC is an isosceles triangle. Find the angle at B 49° and the angle at A. 82°
 - How many years apart are these two years written in Roman numerals? MCMXLV MCMXXXIX. Give your answer in digits. 6

- A plank of wood 7.5m long is cut into two parts so that one part is four times as long as the other. Find the length of each part. 6m 1.5m

7

Train times		Which train, A or B, is the quicker and by how many minutes?
Depart	Arrive	
A 10:45	12:35	<u>B by 8min</u>
B 16:18	18:00	

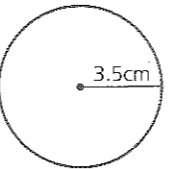
- The total mass of 12 parcels of equal mass is 5.4kg. Find the mass of
a four parcels in kilograms and grams a 1kg 800g
b one parcel in grams. b 450g
- The rectangle X has two axes of symmetry. How many axes of symmetry has
a rhombus Y a 2
b the equilateral triangle Z? b 3

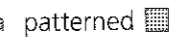
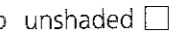
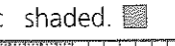
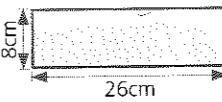
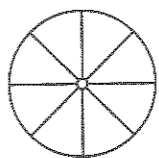


SECTION 3 | Test 8

Mental Arithmetic 4 Answers

- A Answer**
- Write in digits 1.1 million. 1 100 000
 - $£0.81 =$ two 20ps + three 10ps + p 11p
 - $8.07 \times 6 =$ 48.42
 - $1.8\text{km} + 450\text{m} =$ km m 2km 250m
 - 50% of 1.9kg = g 950g
 - $275 \div 7 =$ r 39 r 2
 - $10^3 - 10^2 =$ 900
 - a $\frac{3}{5} =$ % a 60%
b $\frac{9}{10} =$ % b 90%
 - $£10 - (2 \times 46\text{p}) =$ £ £9.08
 - $1\frac{3}{10} + \frac{2}{3} + \frac{7}{10} =$ $2\frac{2}{3}$
 - $1.5\text{l} -$ ml = 600ml 900ml
 - $£0.17 \times 8 =$ £1.36

- B Answer**
- Find in degrees the reflex angle to
a 85° a 275°
b 148° . b 212°
 - How many 50g cans have a total mass of 2kg? 40
 - Decrease £3.50 by 4%. £3.36
 - Approximate
a 9l 870ml to the nearest litre a 10l
b 3.56kg to the nearest $\frac{1}{2}\text{kg}$. b 3 $\frac{1}{2}$ kg
 - What was the date 6 months before 1 March 2000? 1 September 1999
 - Divide nine hundred and seventy-two by nine. 108
 - a 5% of £6.00 = p a 30p
b 15% of £6.00 = p b 90p
 - How long would it take to travel 56km at a speed of 7km per hour? 8h
 - Find the cost of 1.75l at 60p per litre. £1.05
 - Divide a length of 48cm into two pieces so that one is twice as long as the other. 32cm 16cm
 - What fraction in its lowest terms is
a £27 of £36 a $\frac{3}{4}$
b £2.50 of £20? b $\frac{1}{8}$
 -  Find the area of the smallest square into which the circle can be fitted. 49cm²

- C Answer**
- There were 3500 spectators at a football match. 30% were women. How many women were there? 1050
 - A bottle holds 300ml. Find in litres the contents of 12 bottles. 3.6l
 - In the diagram there are 100 small squares. Find as a fraction in its simplest form the part which is
a patterned  a $\frac{1}{4}$
b unshaded  b $\frac{3}{5}$
c shaded.  c $\frac{3}{20}$
 - $3.75 \times 8 = 30$. Write the answers to
a 375×8 a 3000
b 3.75×80 . b 300
 - A holiday started on 25 August and ended on 7 September. For how many days did the holiday last? 14
 - What fraction in its simplest form is equivalent to
a 0.6 a $\frac{3}{5}$
b 0.16? b $\frac{4}{25}$
 - The mean mass of three parcels is 6kg. Two of the parcels have a mass of 4.6kg and 6kg. Find the mass of the third parcel. 7.4kg
 -  A sheet of plywood 26cm by 8cm is cut into strips 2cm wide. Find the total length of the strips. 104cm
 - 1ml or 1cm³ of water has a mass of 1g. Find the mass of water in kilograms
a in a can which holds $1\frac{3}{4}\text{l}$ a 1.75kg
b in a tank the volume of which is 6400cm³. b 6.4kg
 - Seven buns cost £2.47. Find to the nearest penny the cost of one. 35p
 - The circumference of the wheel is 1.5m.  How many metres will the wheel travel in
a 10 turns a 15m
b 100 turns? b 150m
 - The price of $\frac{1}{2}\text{kg}$ of potatoes was increased from 30p to 36p. Find the increase as a fraction in its simplest form of the original price. $\frac{1}{5}$